

Pride Surveys Questionnaire for Grades 7 thru 12 Executive Summary

2013-14 Clinton County Schools

Clinton County, OH

January 06, 2014

sponsored by the *Coalition for a Drug-Free Greater Cincinnati*



PRIDE SURVEYS
160 Vanderbilt Court
Bowling Green, KY 42103
☎ 800.279.6361
☎ 270.746.9598
www.pridesurveys.com

Contents

1 Introduction	3
2 Demographics	4
3 Prevalence of Drug Use	5
4 Students' Perception of Harm	9
5 Students' Perception of Disapproval	11
6 Age of First Use	15
7 Students' Perception of Availability	16
8 Violence Indicators	18
9 Where Students Use	18
10 When Students Use	23
11 School Safety	28
12 Risk and Protective Factors	28

1 Introduction

We at Pride Surveys have reviewed the education legislation, No Child Left Behind (NCLB), and attended meetings in Washington, D.C., with USDOE for briefings on the legislation. This summary and the complete report on your CD-ROM are intended to assist you in meeting the data reporting requirements of NCLB.

Under the NCLB, schools are required to establish a Uniform Management and Information Reporting System. The collected data, from *anonymous student surveys*, shall include:

"...the incidence and prevalence, age of onset, perception of social disapproval of drug use and violence by youth in schools and communities".

The graphs and tables in this summary are compiled from data collected in your school(s) using the ***Pride Questionnaire for Grades 7-12***. These graphs and tables cover the areas typically of most interest for school systems. The areas covered are demographics, past 30 day drug use, perception of risk, students' perception of parental and peer disapproval, age of first use, violence indicators, where and when students use drugs, school and community safety, and risk and protective factors. The drugs covered in this summary are cigarette/tobacco use, alcohol use, marijuana use, and prescription drug use.

This summary and the accompanying CD-ROM (full report) will assist you in meeting the requirements of NCLB and requirements from agencies that have similar requirements in assessment and evaluation.

NOTE: THIS IS ONLY A BRIEF SUMMARY OF YOUR RESULTS. YOUR FULL AND COMPLETE REPORT CAN BE FOUND ON YOUR CD-ROM.

If you have questions about this report or if you wish to have information on other ***Pride Surveys*** services and products, please call the ***Pride Surveys*** Office or write to the following address:

Pride Surveys

Janie Pitcock

160 Vanderbilt Court

Bowling Green, KY 42103

1-800-279-6361

1-270-746-9596

E-Mail: janie.pitcock@pridesurveys.com

Web Site: www.pridesurveys.com

2 Demographics

Total number of students surveyed: **1,917**

- Number of 7th grade students surveyed: **382 (19.9%)**
- Number of 8th grade students surveyed: **105 (5.5%)**
- Number of 9th grade students surveyed: **395 (20.6%)**
- Number of 10th grade students surveyed: **189 (9.9%)**
- Number of 11th grade students surveyed: **549 (28.6%)**
- Number of 12th grade students surveyed: **297 (15.5%)**

Breakdown by sex - it is possible for the sum of the numbers by sex to be less than the overall total since not all students will answer the sex question.

- Number of Male students surveyed: **923 (49.0%)**
- Number of Female students surveyed: **960 (51.0%)**

Breakdown by race - it is possible for the sum of the numbers by race to be less than the overall total since not all students will answer the race question.

- Number of White students surveyed: **1,703 (89.5%)**
- Number of Black or African American students surveyed: **34 (1.8%)**
- Number of Native American or Alaska Native students surveyed: **5 (0.3%)**
- Number of Asian students surveyed: **8 (0.4%)**
- Number of Other students surveyed: **32 (1.7%)**
- Number of Multi-racial students surveyed: **121 (6.4%)**

Are you Hispanic or Latino/Latina?

- Number of Yes students surveyed: **40 (2.3%)**
- Number of No students surveyed: **1,687 (97.7%)**

3 Prevalence of Drug Use

The following tables detail reported use of cigarettes, alcohol, marijuana and prescription drugs in the past 30 days. For tables, *N of Valid* is the number of students who answered the question and *N of Missing* is the number of students who did not answer the question.

Table 1: Past 30 Day Use – **Cigarettes**

Grade Level	N of Valid	N of Miss	30 Day Use
7th	354	28	4.8
8th	99	6	14.1
9th	378	17	9.3
10th	178	11	21.3
11th	528	21	20.5
12th	288	9	37.2
6-8	453	34	6.8
9-12	1372	58	21.0
Total	1825	92	17.5

Table 2: Past 30 Day Use – **Alcohol**

Grade Level	N of Valid	N of Miss	30 Day Use
7th	353	29	4.2
8th	99	6	19.2
9th	380	15	13.9
10th	178	11	24.2
11th	526	23	28.3
12th	290	7	40.3
6-8	452	35	7.5
9-12	1374	56	26.3
Total	1826	91	21.7

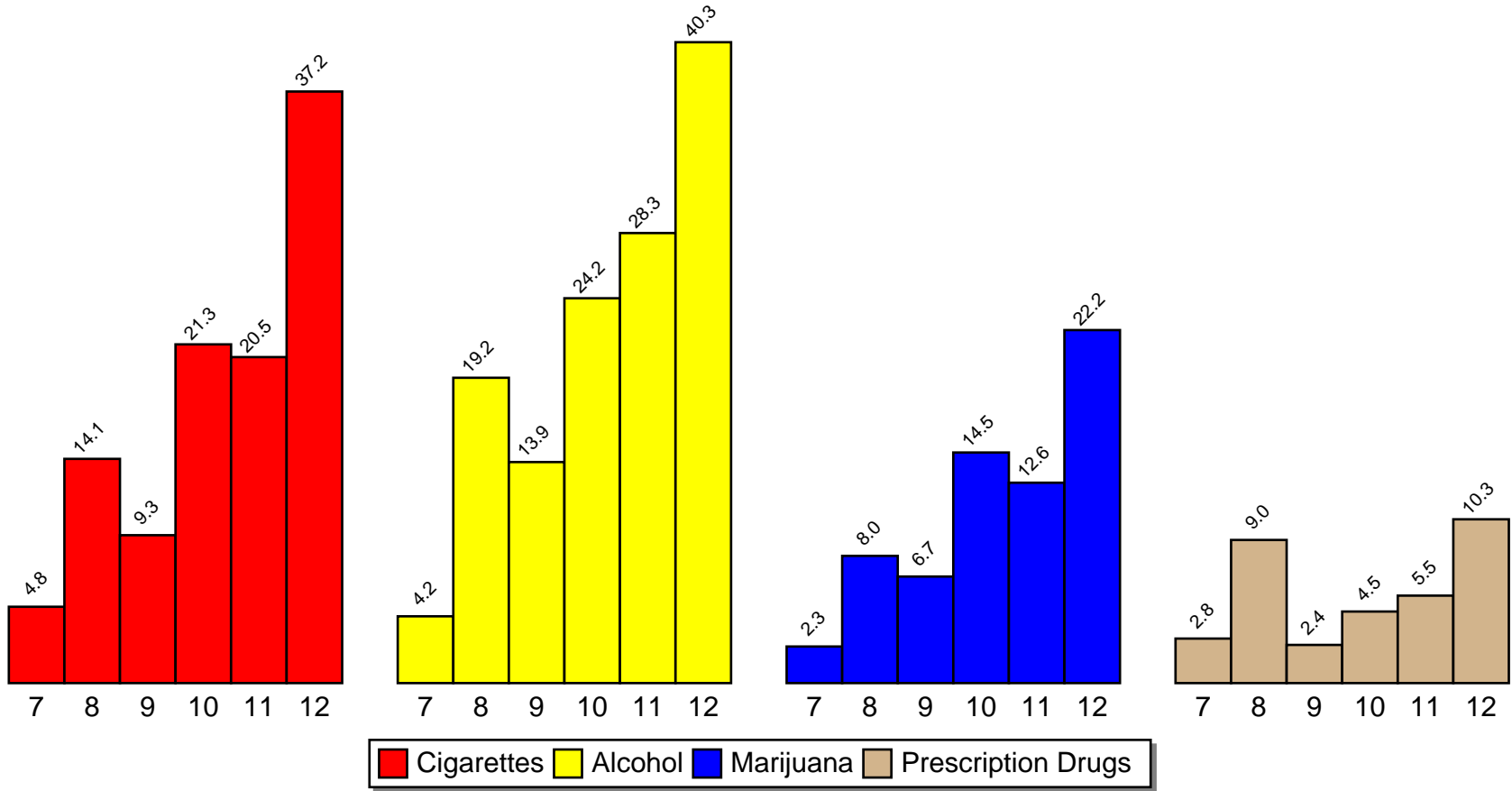
Table 3: Past 30 Day Use – **Marijuana**

Grade Level	N of Valid	N of Miss	30 Day Use
7th	346	36	2.3
8th	100	5	8.0
9th	373	22	6.7
10th	179	10	14.5
11th	522	27	12.6
12th	288	9	22.2
6-8	446	41	3.6
9-12	1362	68	13.3
Total	1808	109	10.9

Table 4: Past 30 Day Use – **Prescription Drugs**

Grade Level	N of Valid	N of Miss	30 Day Use
7th	351	31	2.8
8th	100	5	9.0
9th	378	17	2.4
10th	179	10	4.5
11th	527	22	5.5
12th	290	7	10.3
6-8	451	36	4.2
9-12	1374	56	5.5
Total	1825	92	5.2

Past 30 Day Use of Cigarettes, Alcohol, Marijuana & Prescription Drugs



Source: Pride Surveys

Table 5: Frequency of Use – Any **Tobacco?**

Grade Level	N of Valid	N of Miss	Daily	Weekly	Annual
7th	368	14	0.5	1.9	5.7
8th	105	0	3.8	8.6	22.9
9th	392	3	4.1	7.1	16.8
10th	183	6	12.6	19.1	37.2
11th	544	5	17.3	21.5	36.9
12th	296	1	31.4	39.5	53.0
6-8	473	14	1.3	3.4	9.5
9-12	1415	15	16.0	21.0	34.8
Total	1888	29	12.3	16.6	28.4

Table 7: Frequency of Use – Any **Marijuana?**

Grade Level	N of Valid	N of Miss	Daily	Weekly	Annual
7th	365	17	0.0	1.1	2.5
8th	105	0	4.8	8.6	14.3
9th	389	6	1.8	4.1	11.1
10th	183	6	5.5	10.4	23.0
11th	544	5	3.3	7.9	23.5
12th	295	2	9.8	14.9	38.3
6-8	470	17	1.1	2.8	5.1
9-12	1411	19	4.5	8.6	23.1
Total	1881	36	3.7	7.2	18.6

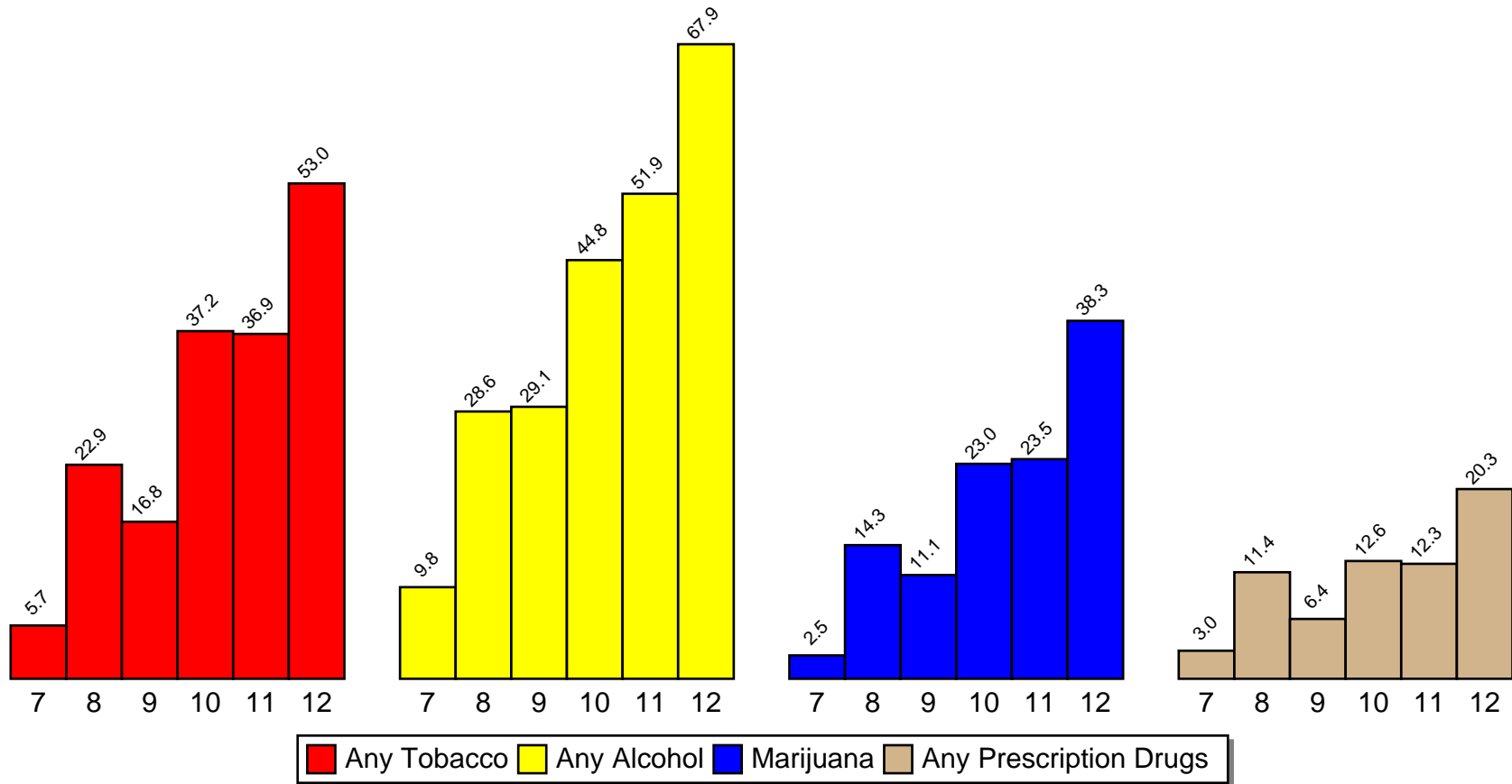
Table 8: Frequency of Use – Any **Prescription Drugs?**

Grade Level	N of Valid	N of Miss	Daily	Weekly	Annual
7th	367	15	0.5	0.5	3.0
8th	105	0	2.9	6.7	11.4
9th	392	3	0.8	1.5	6.4
10th	183	6	1.1	4.4	12.6
11th	544	5	0.9	2.6	12.3
12th	296	1	3.7	6.8	20.3
6-8	472	15	1.1	1.9	4.9
9-12	1415	15	1.5	3.4	12.4
Total	1887	30	1.4	3.0	10.5

Table 6: Frequency of Use – Any **Alcohol?**

Grade Level	N of Valid	N of Miss	Daily	Weekly	Annual
7th	367	15	0.3	0.8	9.8
8th	105	0	4.8	9.5	28.6
9th	392	3	0.3	3.8	29.1
10th	183	6	0.5	9.8	44.8
11th	543	6	1.3	8.5	51.9
12th	296	1	4.7	17.6	67.9
6-8	472	15	1.3	2.8	14.0
9-12	1414	16	1.6	9.3	48.0
Total	1886	31	1.5	7.6	39.5

% Students Who Use Tobacco, Alcohol, Marijuana, & Prescription Drugs Annual Use (ie. Use in the Past Year)



Source: Pride Surveys

4 Students' Perception of Harm

Students are asked about their perception of harm of any use of various drugs with the possible responses being *No Harm*, *Some Harm*, *Harmful* or *Very Harmful*. Past analysis of national statistics indicates that as students' perception of harm increases, use of substances decreases. It is also typical for the perception of harm (*Harmful* or *Very Harmful*) to decrease as a child gets older. Your students' responses are detailed in the following tables.

Table 9: Students' Perception of Harm of **Tobacco**

Grade Level	N of Valid	N of Miss	Harmful or Very Harmful
7th	360	22	90.0
8th	103	2	83.5
9th	389	6	88.9
10th	177	12	91.0
11th	538	11	84.2
12th	293	4	81.9
6-8	463	24	88.6
9-12	1397	33	85.9
Total	1860	57	86.6

Table 10: Students' Perception of Harm of **Alcohol**

Grade Level	N of Valid	N of Miss	Harmful or Very Harmful
7th	358	24	80.2
8th	104	1	73.1
9th	387	8	75.2
10th	177	12	74.6
11th	537	12	66.1
12th	292	5	58.9
6-8	462	25	78.6
9-12	1393	37	68.2
Total	1855	62	70.8

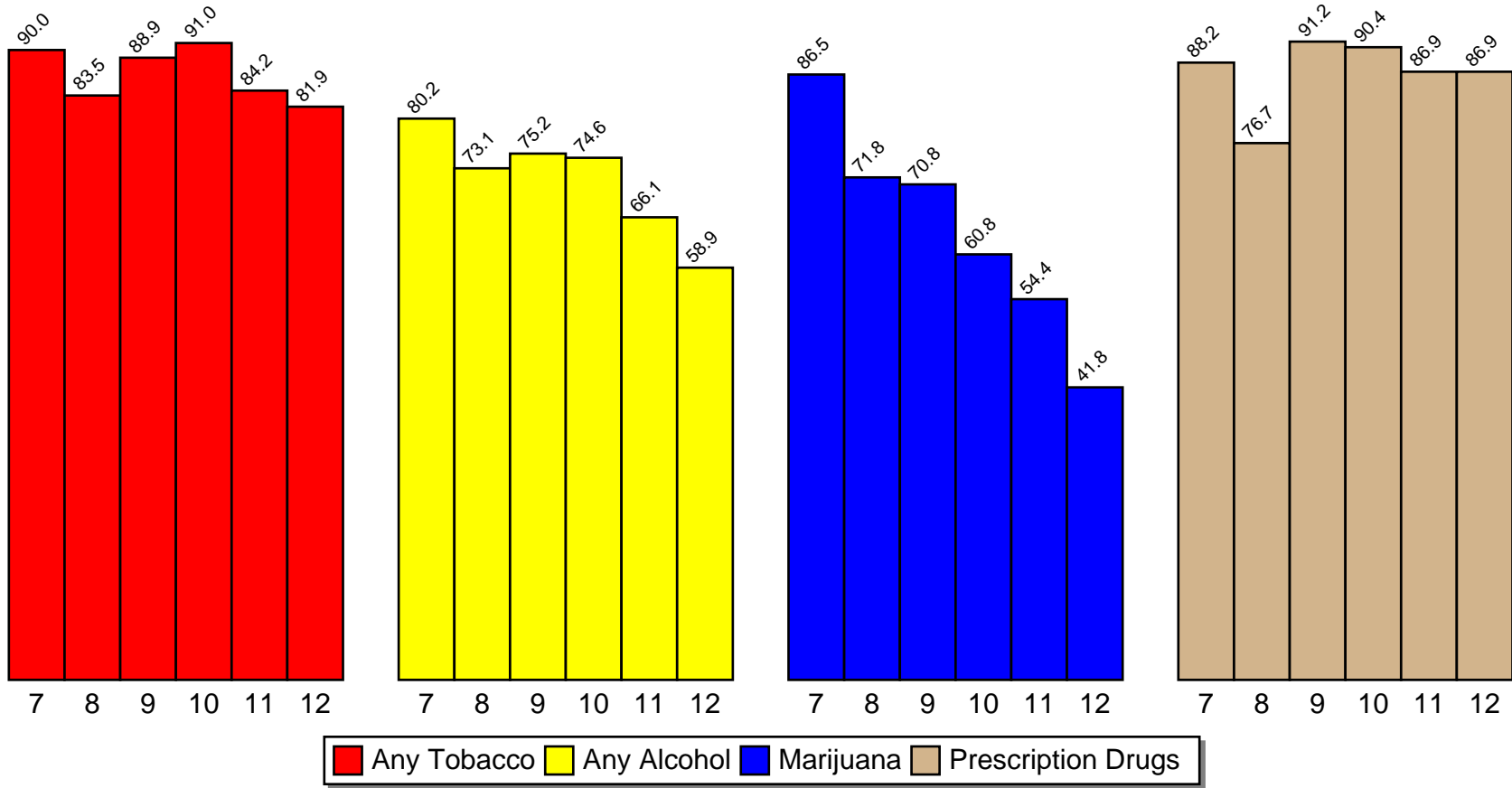
Table 11: Students' Perception of Harm of **Marijuana**

Grade Level	N of Valid	N of Miss	Harmful or Very Harmful
7th	356	26	86.5
8th	103	2	71.8
9th	384	11	70.8
10th	176	13	60.8
11th	533	16	54.4
12th	292	5	41.8
6-8	459	28	83.2
9-12	1385	45	57.1
Total	1844	73	63.6

Table 12: Students' Perception of Harm of **Prescription Drugs**

Grade Level	N of Valid	N of Miss	Harmful or Very Harmful
7th	356	26	88.2
8th	103	2	76.7
9th	386	9	91.2
10th	177	12	90.4
11th	533	16	86.9
12th	291	6	86.9
6-8	459	28	85.6
9-12	1387	43	88.5
Total	1846	71	87.8

% Students Who Perceive Tobacco, Alcohol, Marijuana, & Prescription Drugs As Harmful Or Very Harmful



5 Students' Perception of Disapproval

Past analysis of national statistics indicates that the majority of students tend to perceive parents as feeling it is *Wrong* or *Very Wrong* for students to use tobacco, alcohol, marijuana and prescription drugs for all grade levels. Your students' responses are detailed in the following tables.

Table 13: Students' Perception Of **Parents'** Disapproval Of Use of **Tobacco**

Grade Level	N of Valid	N of Miss	Wrong or Very Wrong
7th	341	41	96.8
8th	103	2	92.2
9th	387	8	93.8
10th	176	13	87.5
11th	533	16	87.1
12th	292	5	73.6
6-8	444	43	95.7
9-12	1388	42	86.2
Total	1832	85	88.5

Table 14: Students' Perception Of **Parents'** Disapproval Of Use of **Alcohol**

Grade Level	N of Valid	N of Miss	Wrong or Very Wrong
7th	335	47	94.6
8th	101	4	89.1
9th	383	12	89.0
10th	176	13	85.8
11th	534	15	77.0
12th	289	8	58.5
6-8	436	51	93.3
9-12	1382	48	77.6
Total	1818	99	81.4

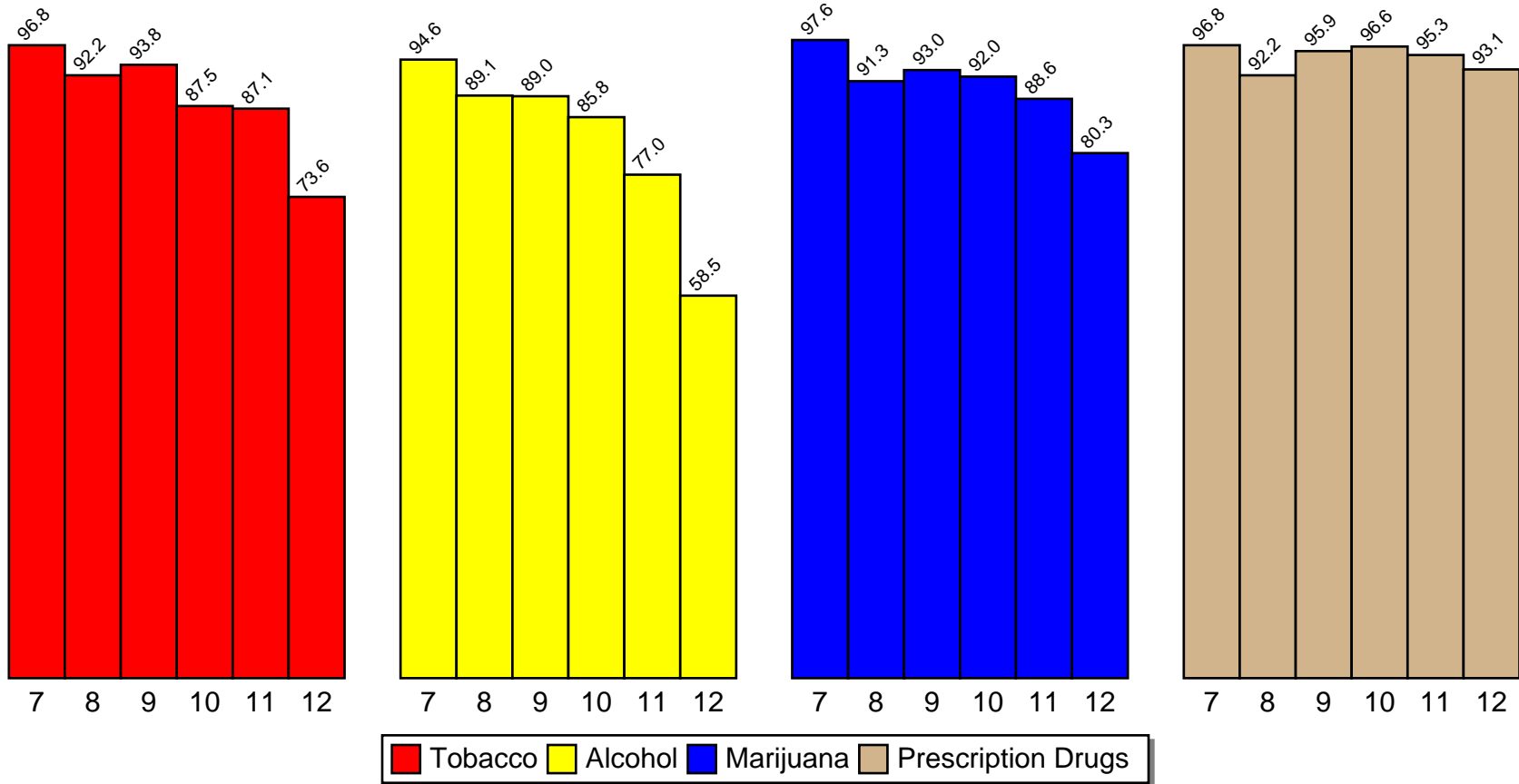
Table 15: Students' Perception Of **Parents'** Disapproval Of Use of **Marijuana**

Grade Level	N of Valid	N of Miss	Wrong or Very Wrong
7th	338	44	97.6
8th	103	2	91.3
9th	386	9	93.0
10th	175	14	92.0
11th	533	16	88.6
12th	289	8	80.3
6-8	441	46	96.1
9-12	1383	47	88.5
Total	1824	93	90.4

Table 16: Students' Perception Of **Parents'** Disapproval Of Use of **Prescription Drugs**

Grade Level	N of Valid	N of Miss	Wrong or Very Wrong
7th	341	41	96.8
8th	102	3	92.2
9th	386	9	95.9
10th	176	13	96.6
11th	534	15	95.3
12th	290	7	93.1
6-8	443	44	95.7
9-12	1386	44	95.2
Total	1829	88	95.3

% Perceive Parents Feel It Is Wrong or Very Wrong For Students To Use Tobacco, Alcohol, Marijuana, and Prescription Drugs



Source: Pride Surveys

Typically, students perceive a decreasing amount of disapproval from their friends as they grow older. This is helpful in understanding peer pressure. The following tables detail your students' responses to their friends' disapproval.

Table 17: Students' Perception of **Friends'** Disapproval of Use of **Tobacco**

Grade Level	N of Valid	N of Miss	Wrong or Very Wrong
7th	339	43	88.2
8th	102	3	66.7
9th	386	9	72.5
10th	176	13	59.1
11th	533	16	54.0
12th	292	5	34.9
6-8	441	46	83.2
9-12	1387	43	55.8
Total	1828	89	62.4

Table 18: Students' Perception of **Friends'** Disapproval of Use of **Alcohol**

Grade Level	N of Valid	N of Miss	Wrong or Very Wrong
7th	341	41	85.9
8th	103	2	60.2
9th	385	10	58.7
10th	176	13	43.2
11th	536	13	33.2
12th	295	2	24.1
6-8	444	43	80.0
9-12	1392	38	39.6
Total	1836	81	49.3

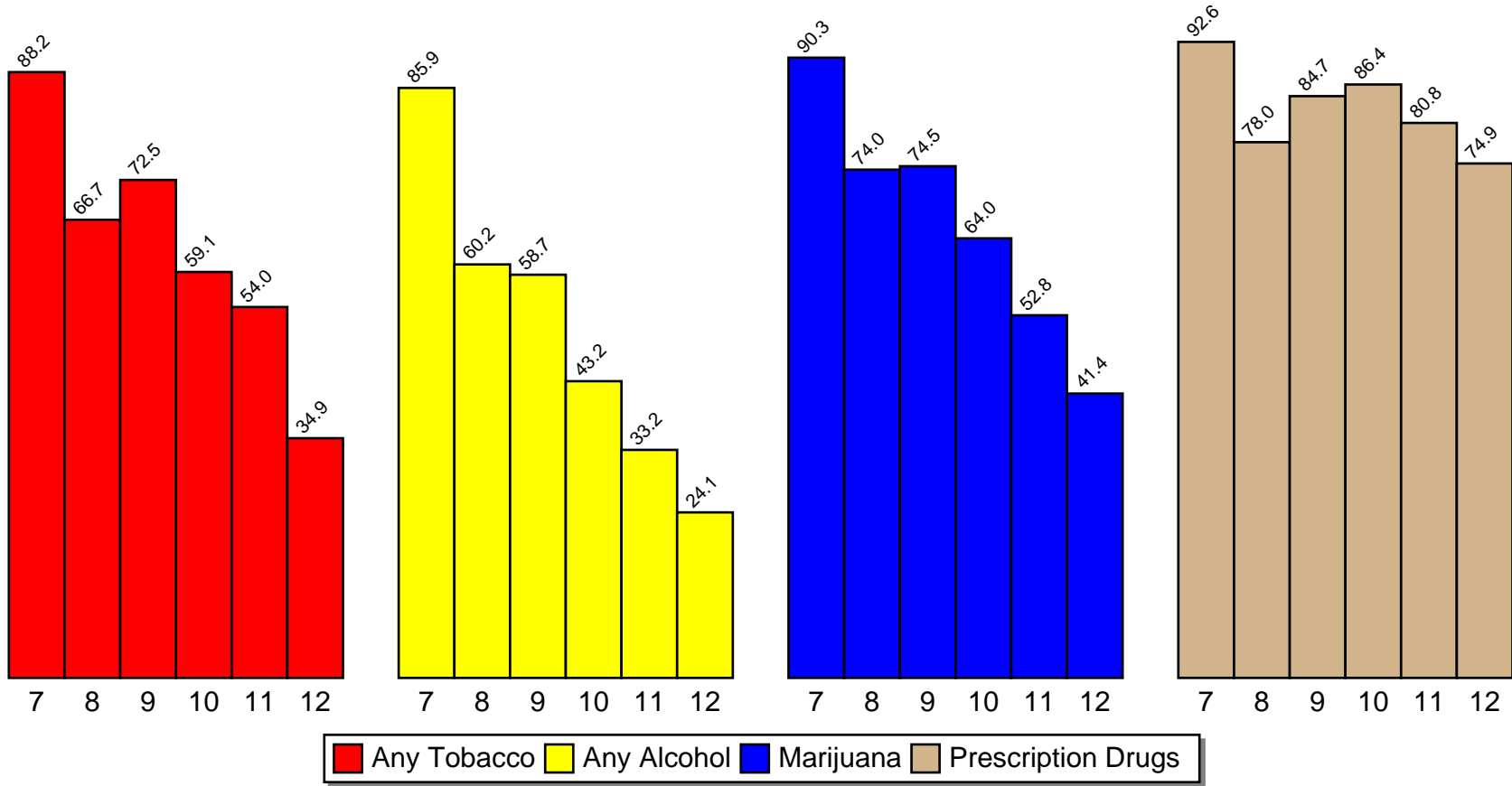
Table 19: Students' Perception of **Friends'** Disapproval of Use of **Marijuana**

Grade Level	N of Valid	N of Miss	Wrong or Very Wrong
7th	340	42	90.3
8th	100	5	74.0
9th	385	10	74.5
10th	175	14	64.0
11th	534	15	52.8
12th	290	7	41.4
6-8	440	47	86.6
9-12	1384	46	57.9
Total	1824	93	64.8

Table 20: Students' Perception of **Friends'** Disapproval of Use of **Prescription Drugs**

Grade Level	N of Valid	N of Miss	Wrong or Very Wrong
7th	340	42	92.6
8th	100	5	78.0
9th	385	10	84.7
10th	176	13	86.4
11th	531	18	80.8
12th	291	6	74.9
6-8	440	47	89.3
9-12	1383	47	81.3
Total	1823	94	83.3

% Perceive Friends Feel It Is Wrong or Very Wrong For Students To Use Tobacco, Alcohol, Marijuana, and Prescription Drugs



Source: Pride Surveys

6 Age of First Use

The question *At what age did you first use...* is used to measure this statistic. The possible responses to this question range from *10 or Under* to *17 or Older* and *Never Used*. The table shows the average age of first use for those students who answered the question with a response other than *Never Used*.

Table 21: When did you first use any **tobacco**?

Grade Level	N of Valid	N of Miss	Avg Age
7th	32	350	10.8
8th	31	74	11.6
9th	90	305	12.3
10th	79	110	13.0
11th	232	317	13.4
12th	174	123	13.2
6-8	63	424	11.2
9-12	575	855	13.1
Total	638	1279	12.9

Table 22: When did you first use any **alcohol**?

Grade Level	N of Valid	N of Miss	Avg Age
7th	50	332	11.0
8th	39	66	11.7
9th	142	253	12.5
10th	81	108	13.3
11th	296	253	14.0
12th	212	85	14.3
6-8	89	398	11.3
9-12	731	699	13.7
Total	820	1097	13.5

Table 23: When did you first use any **marijuana**?

Grade Level	N of Valid	N of Miss	Avg Age
7th	12	370	12.2
8th	15	90	11.8
9th	50	345	12.6
10th	45	144	13.4
11th	152	397	14.0
12th	124	173	14.4
6-8	27	460	12.0
9-12	371	1059	13.9
Total	398	1519	13.7

Table 24: When did you first use any **prescription drugs**?

Grade Level	N of Valid	N of Miss	Avg Age
7th	7	375	12.1
8th	7	98	11.7
9th	13	382	12.5
10th	15	174	13.3
11th	45	504	14.1
12th	36	261	14.4
6-8	14	473	11.9
9-12	109	1321	13.9
Total	123	1794	13.7

7 Students' Perception of Availability

Past analysis of national statistics indicates that as students get older a larger percentage of them tend to perceive tobacco, alcohol, marijuana, and prescription drugs as *Fairly Easy* or *Very Easy* to get. Your students' responses are detailed in the following tables.

Table 25: Students' Perception of Availability of **Tobacco**

Grade Level	N of Valid	N of Miss	Fairly Easy or Very Easy to Get
7th	345	37	26.7
8th	102	3	40.2
9th	379	16	39.3
10th	173	16	48.0
11th	540	9	57.8
12th	295	2	74.2
6-8	447	40	29.8
9-12	1387	43	55.0
Total	1834	83	48.9

Table 26: Students' Perception of Availability of **Alcohol**

Grade Level	N of Valid	N of Miss	Fairly Easy or Very Easy to Get
7th	342	40	25.4
8th	103	2	29.1
9th	381	14	41.5
10th	173	16	37.0
11th	539	10	49.0
12th	295	2	56.6
6-8	445	42	26.3
9-12	1388	42	47.0
Total	1833	84	42.0

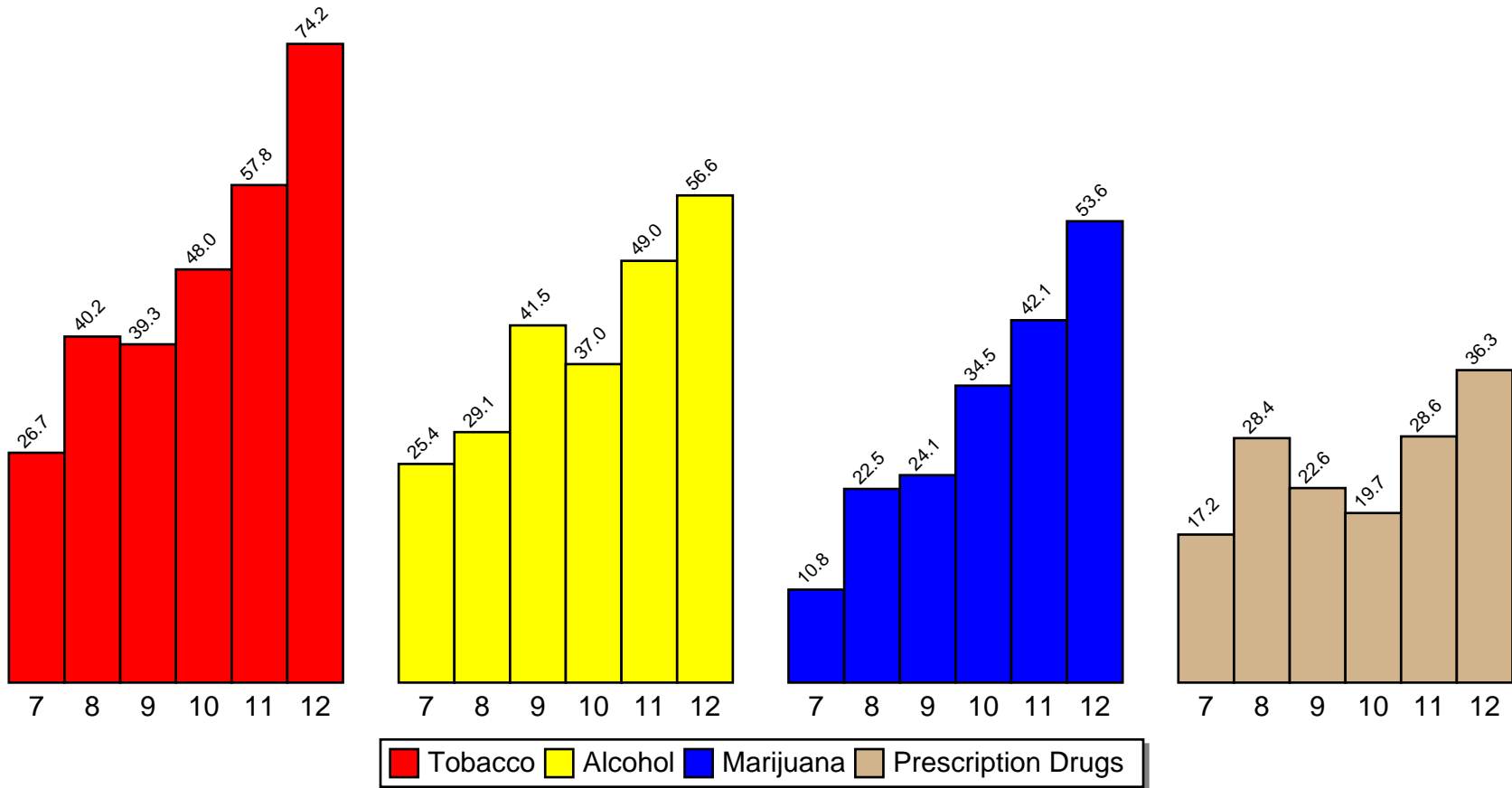
Table 27: Students' Perception of Availability of **Marijuana**

Grade Level	N of Valid	N of Miss	Fairly Easy or Very Easy to Get
7th	342	40	10.8
8th	102	3	22.5
9th	381	14	24.1
10th	174	15	34.5
11th	539	10	42.1
12th	295	2	53.6
6-8	444	43	13.5
9-12	1389	41	38.7
Total	1833	84	32.6

Table 28: Students' Perception of Availability of **Prescription Drugs**

Grade Level	N of Valid	N of Miss	Fairly Easy or Very Easy to Get
7th	343	39	17.2
8th	102	3	28.4
9th	380	15	22.6
10th	173	16	19.7
11th	539	10	28.6
12th	295	2	36.3
6-8	445	42	19.8
9-12	1387	43	27.5
Total	1832	85	25.6

% Students Who Perceive Tobacco, Alcohol, Marijuana, and Prescription Drugs As Fairly Easy Or Very Easy To Get



Source: Pride Surveys

8 Violence Indicators

The following table lists the percentage of students who made any positive response to the following questions.

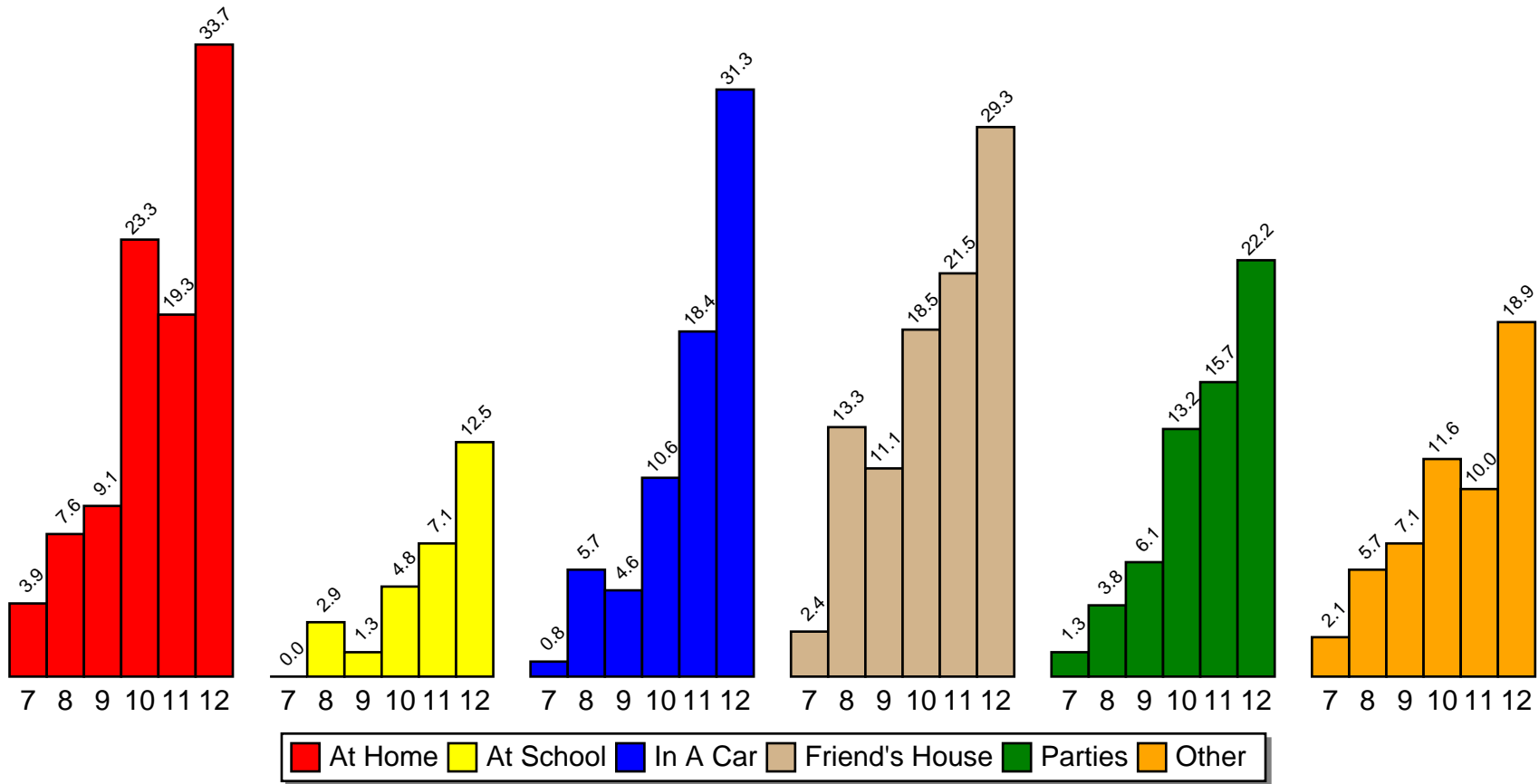
Table 29: Violence Indicators

Violence Indicator	Num	Pct
Threatened a fellow student	494	27.4%
Get into trouble with police	407	21.5%
Being hurt at school	311	17.3%
Being afraid at school	290	16.3%
Participated in gangs	133	7.0%

9 Where Students Use

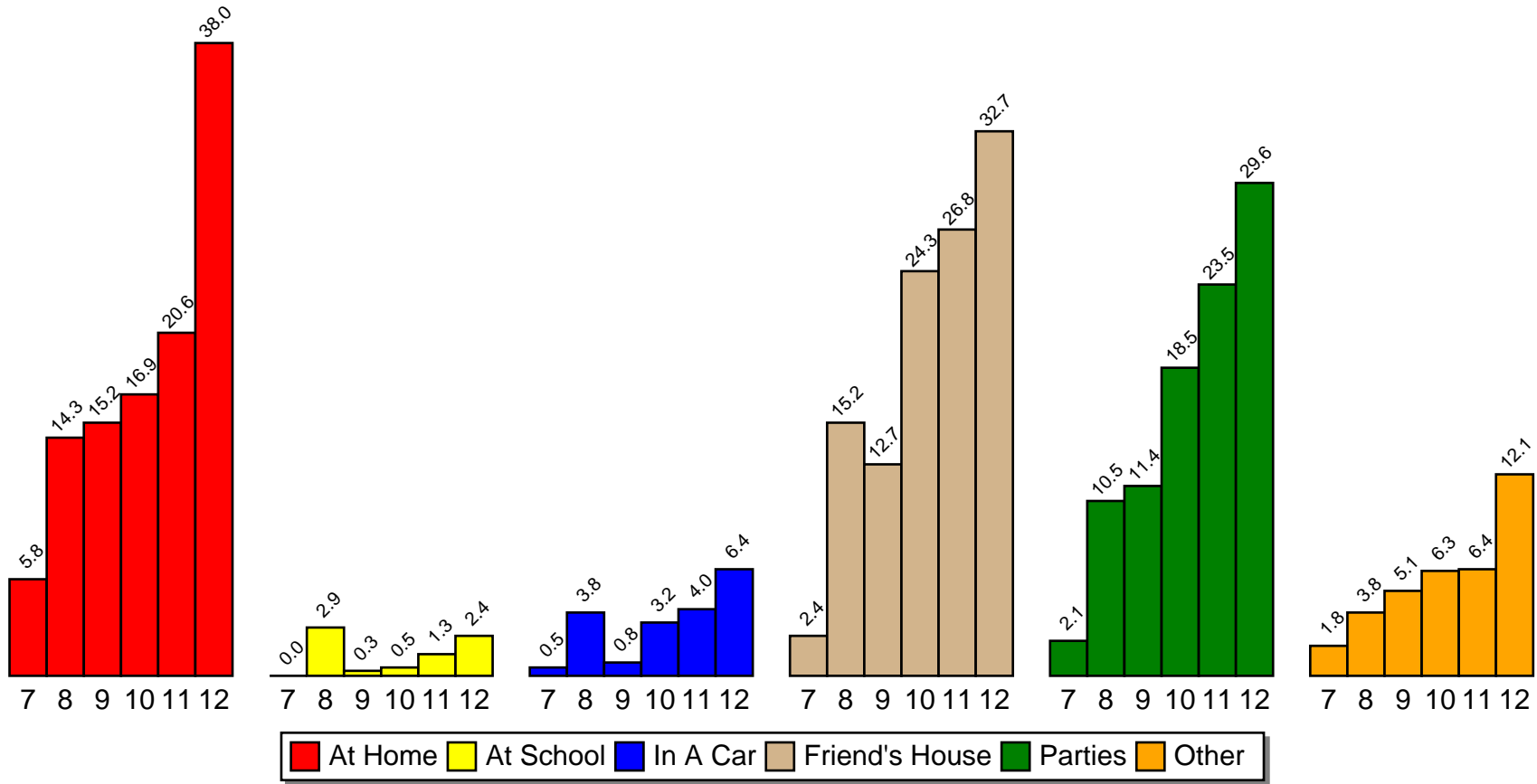
The following graphs show where students report using tobacco, alcohol, marijuana, and prescription drugs. Past analysis of national statistics show that *At School* is typically the *least* popular place of use.

Where Do You Use Any Tobacco



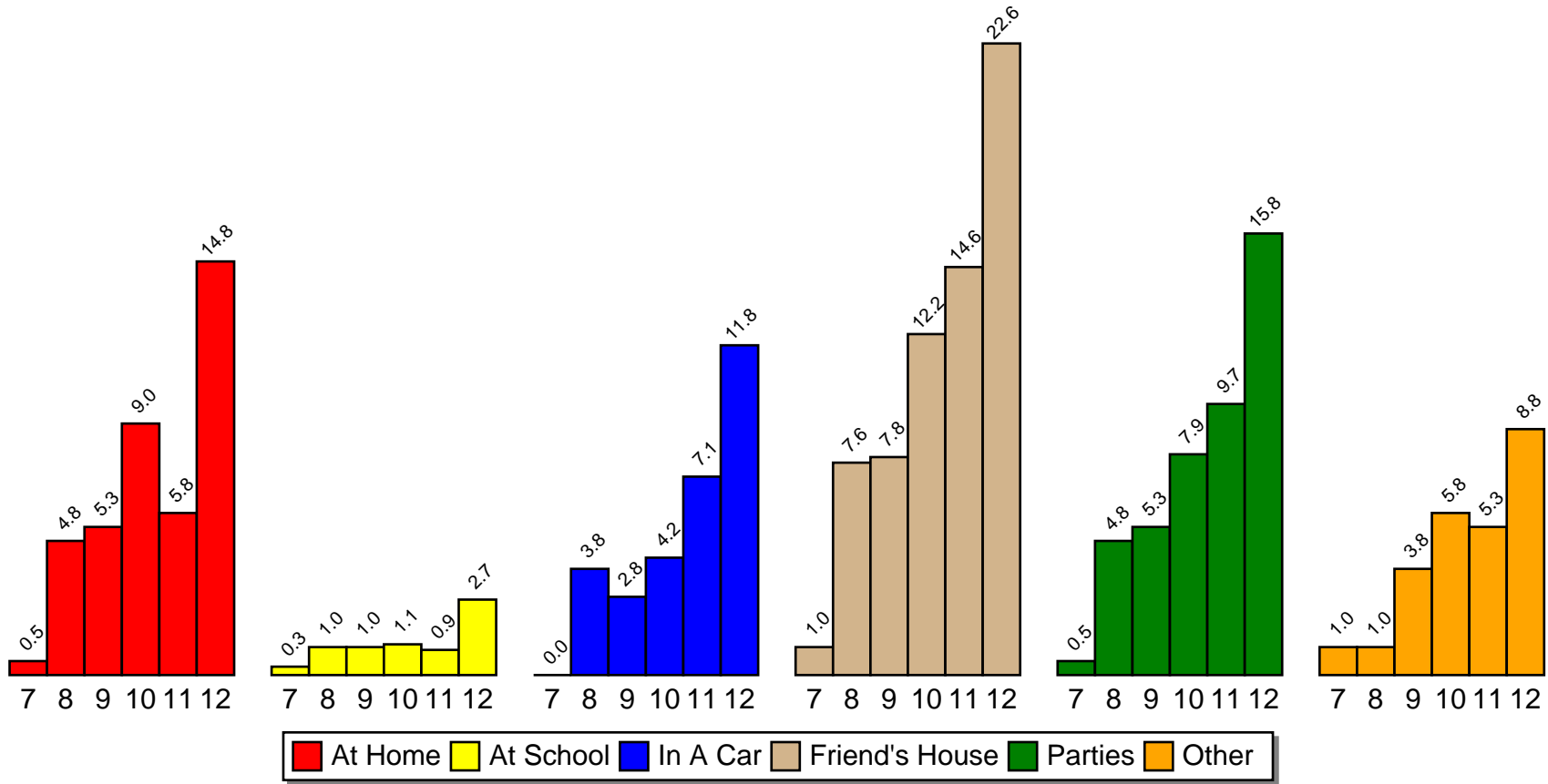
Source: Pride Surveys

Where Do You Use Any Alcohol



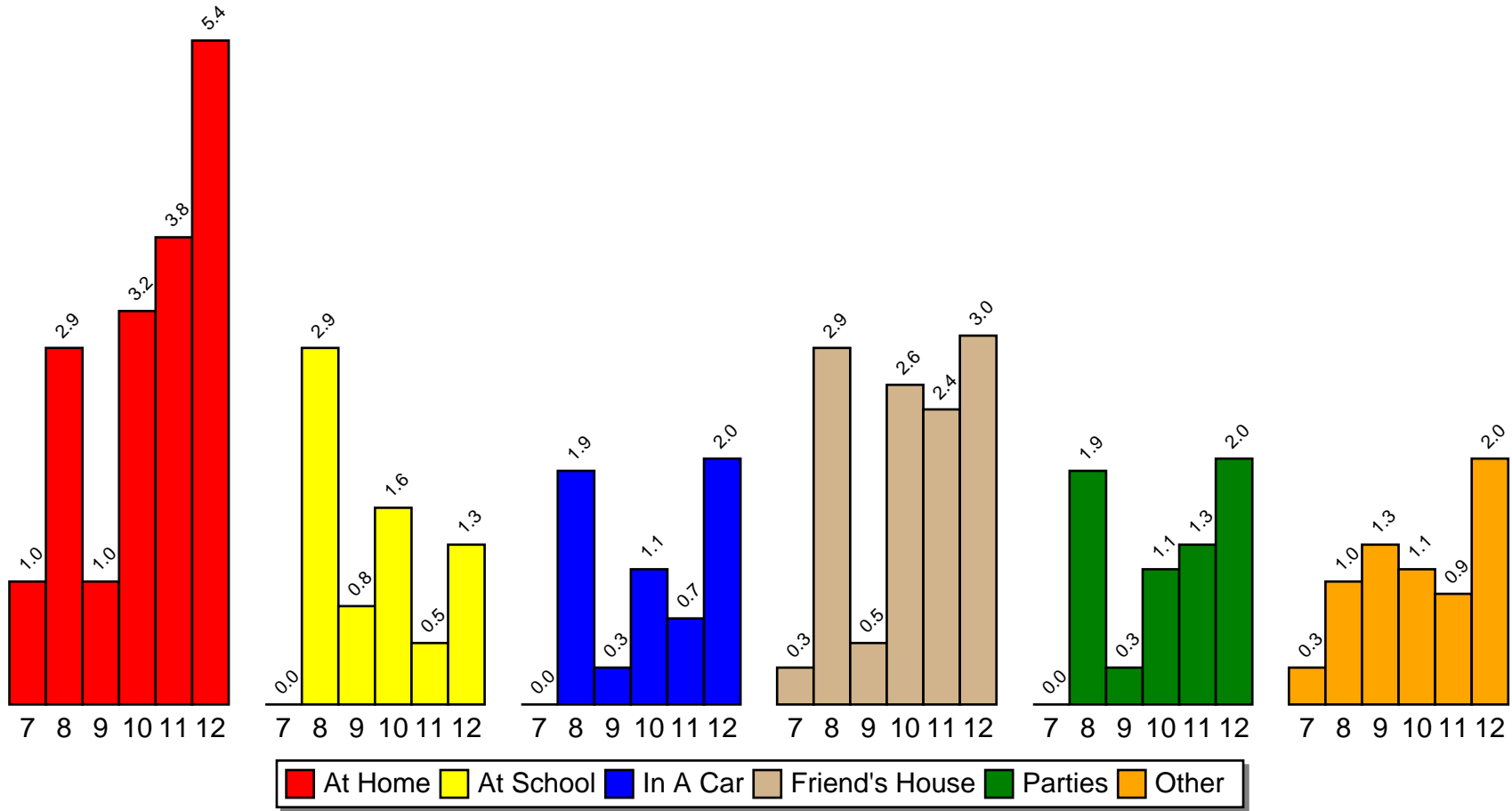
Source: Pride Surveys

Where Do You Use Marijuana



Source: Pride Surveys

Where Do You Use Prescription Drugs

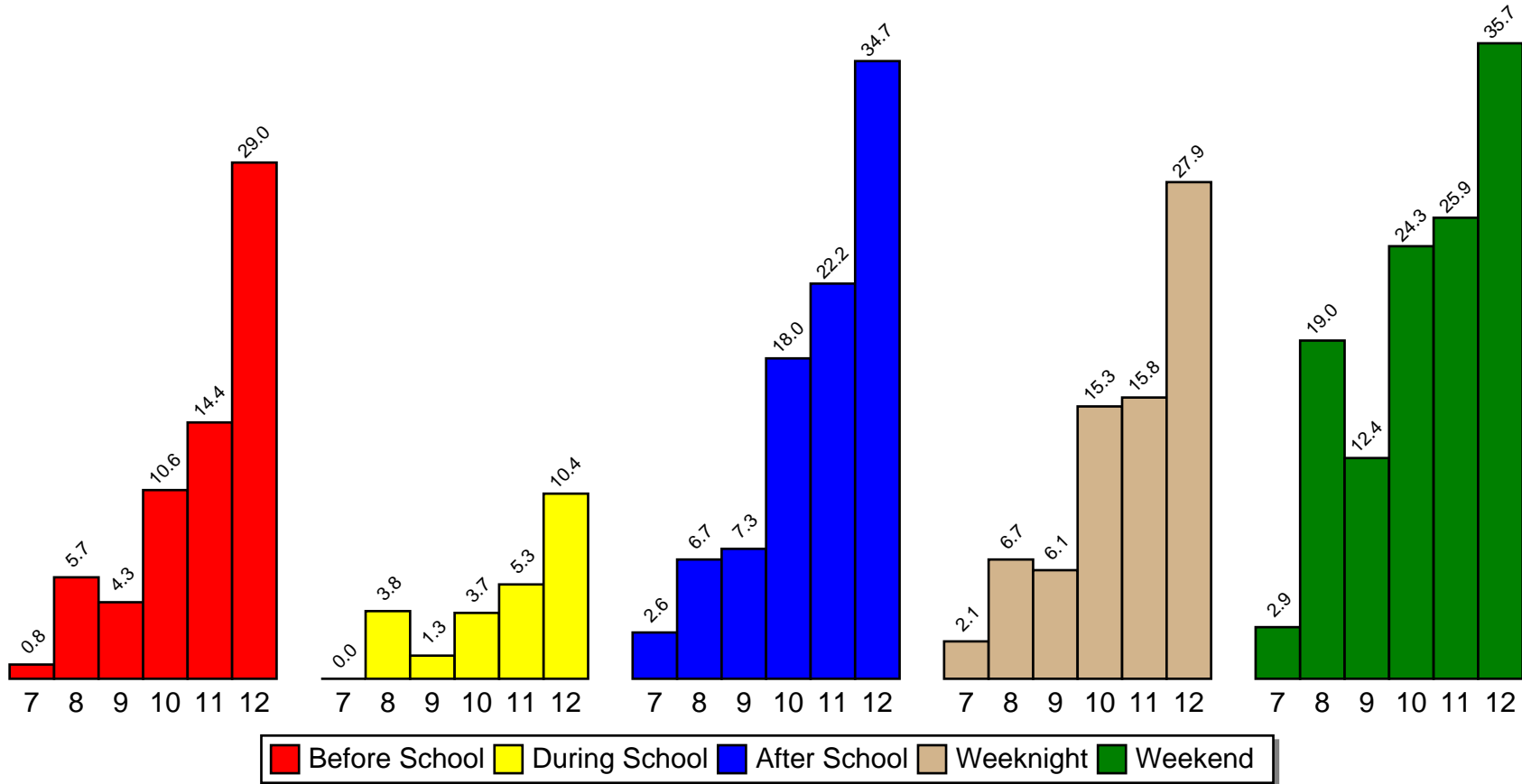


Source: Pride Surveys

10 When Students Use

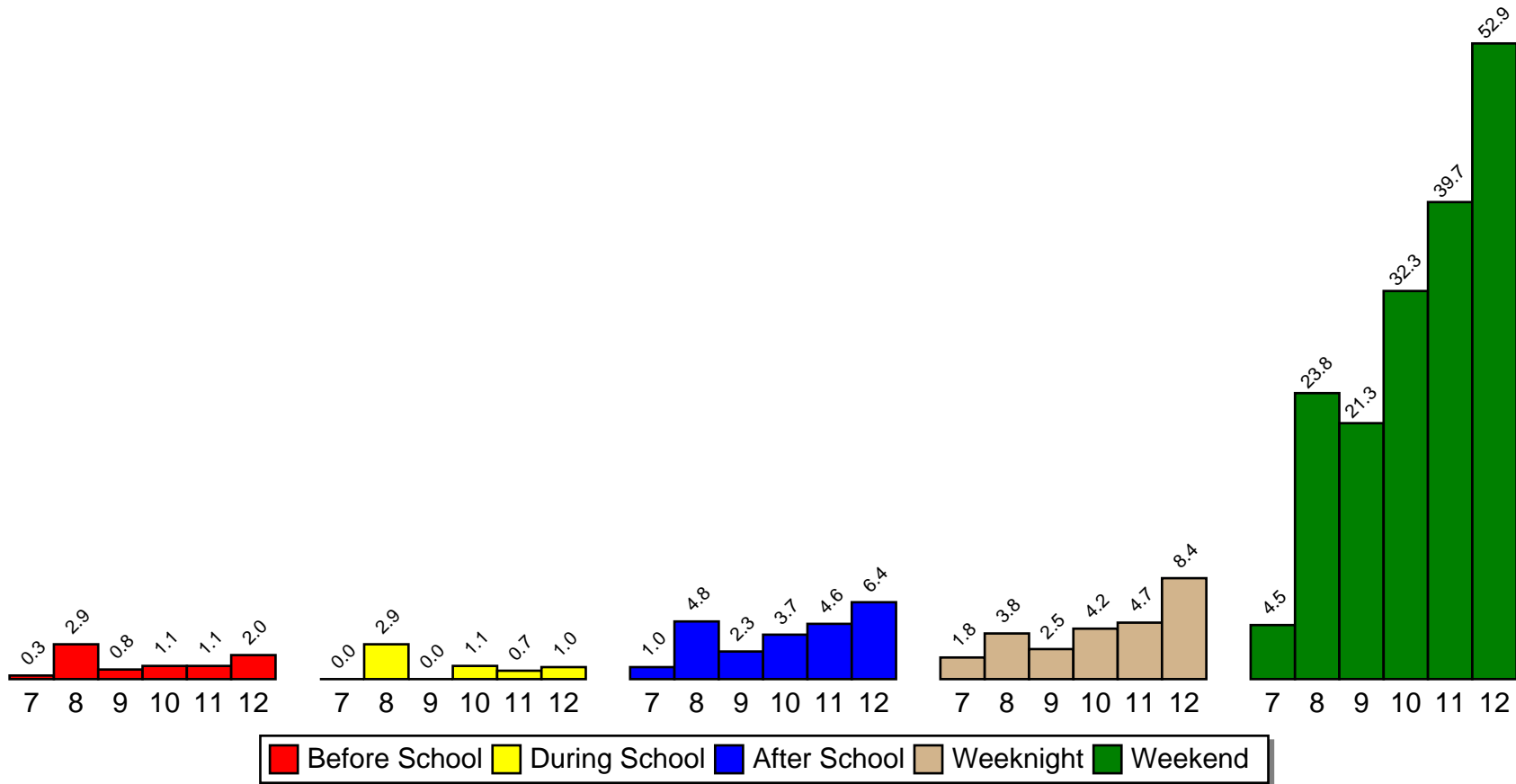
The following graphs show when students report using tobacco, alcohol, marijuana, and prescription drugs. Past analysis of national statistics show that *During School* is typically the *least* popular time of use.

When Do You Use Any Tobacco



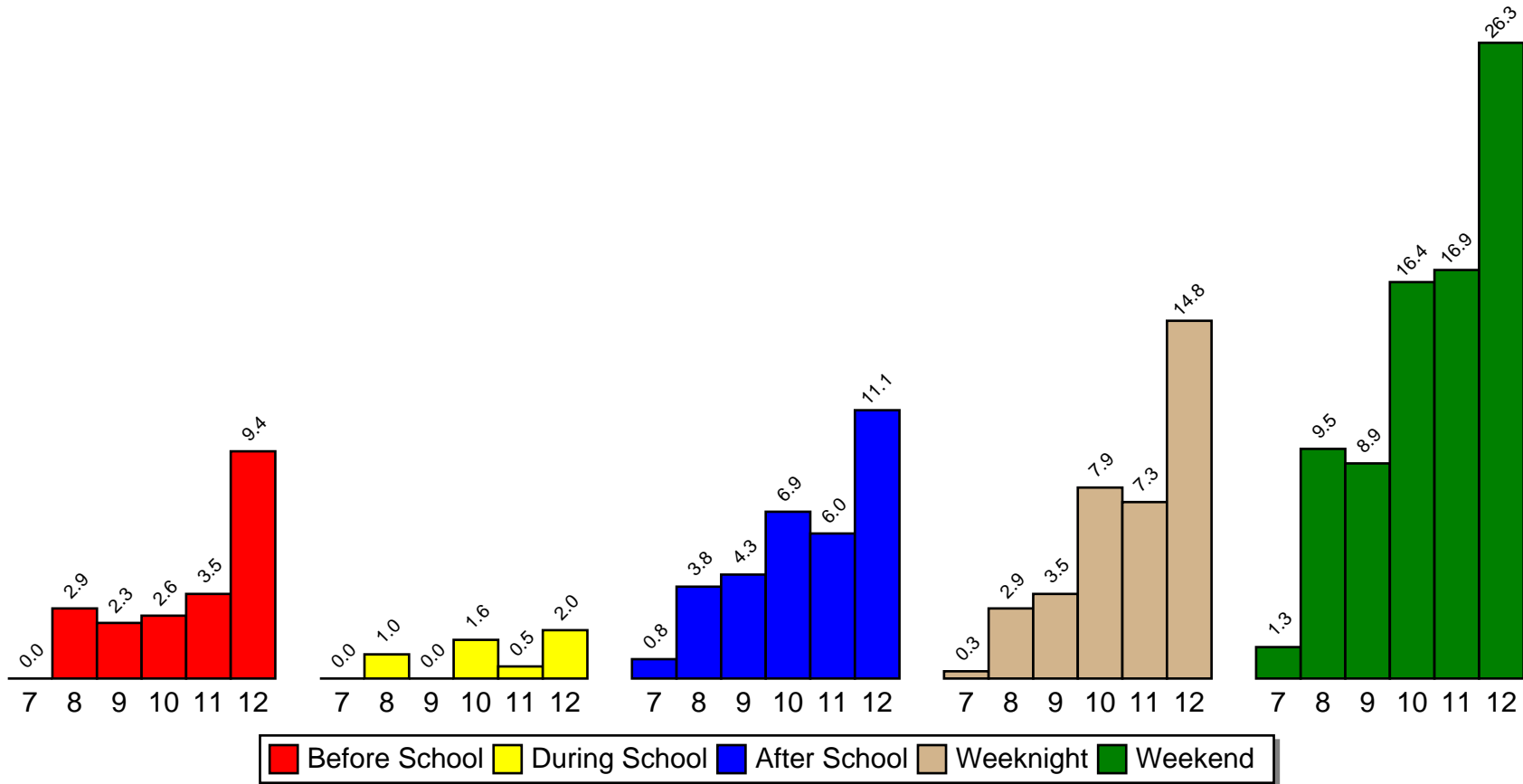
Source: Pride Surveys

When Do You Use Any Alcohol



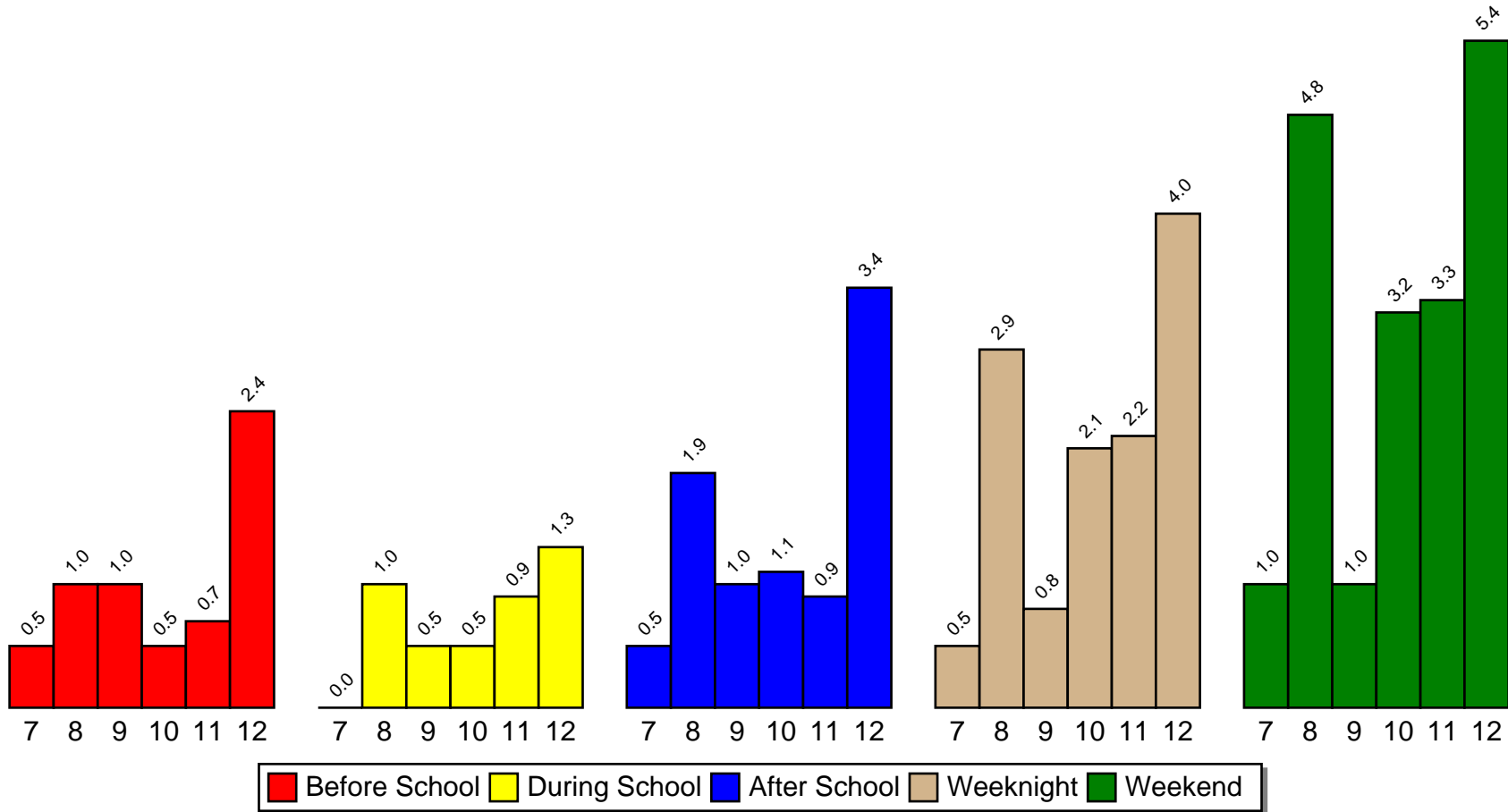
Source: Pride Surveys

When Do You Use Marijuana



Source: Pride Surveys

When Do You Use Prescription Drugs



Source: Pride Surveys

11 School Safety

The following table lists the percentage of students who responded as *Never* or *Seldom* feeling safe in the following school locations.

Table 30: School Safety

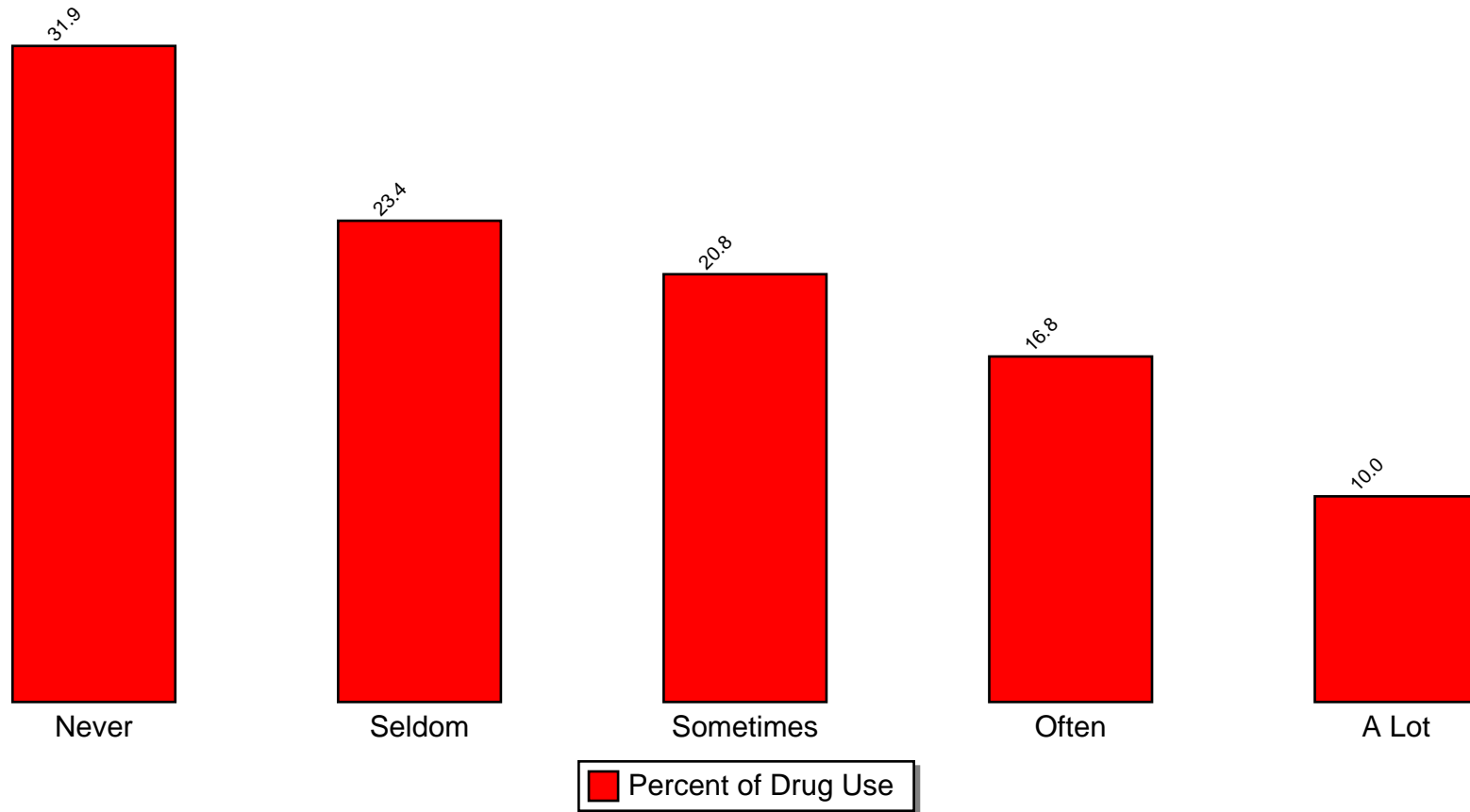
Location	Num	Pct
On the school bus	306	17.3%
In the parking lot	306	17.2%
In the bathroom	275	15.3%
In the halls	264	14.7%
At school events (ballgames, etc.)	223	12.5%
In the gym	221	12.4%
In the cafeteria (lunchroom)	212	11.8%
In the classroom	183	10.2%

*Pct represents percent who responded *Never* or *Seldom*

12 Risk and Protective Factors

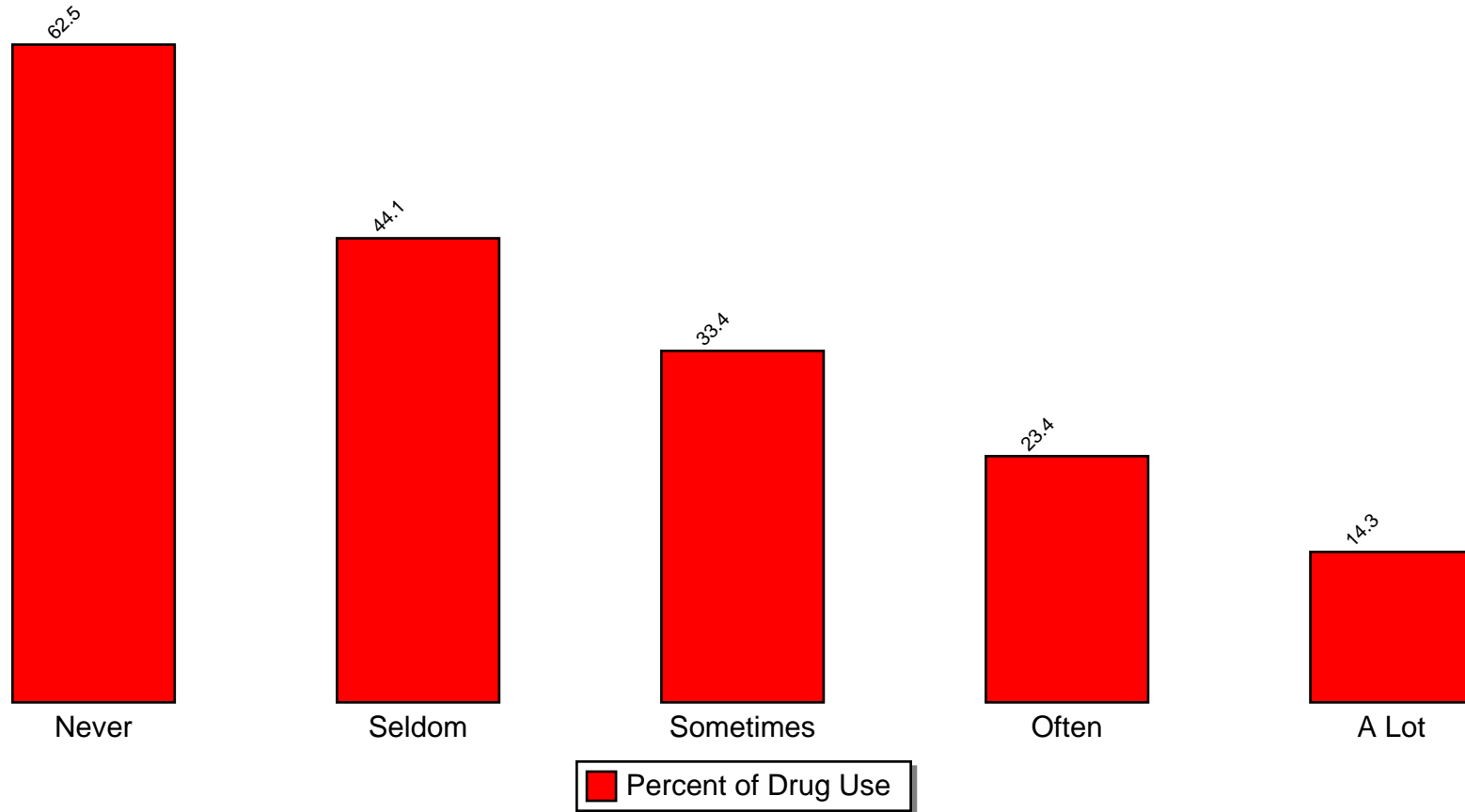
The following graphs on illicit drug use by risk & protective factors show for each category (Never, Seldom, Sometimes, Often, A Lot) of a risk or protective factor question the percentage of students who report using illicit drugs. For example, on the question of taking part in school activities, if the bar labeled NEVER was 40%, this means that OF those students who responded NEVER to taking part in school activities, 40% reported using an illicit drug.

% Students Who Use Illicit Drugs by Take Part in School Activities (School Protective Factor)



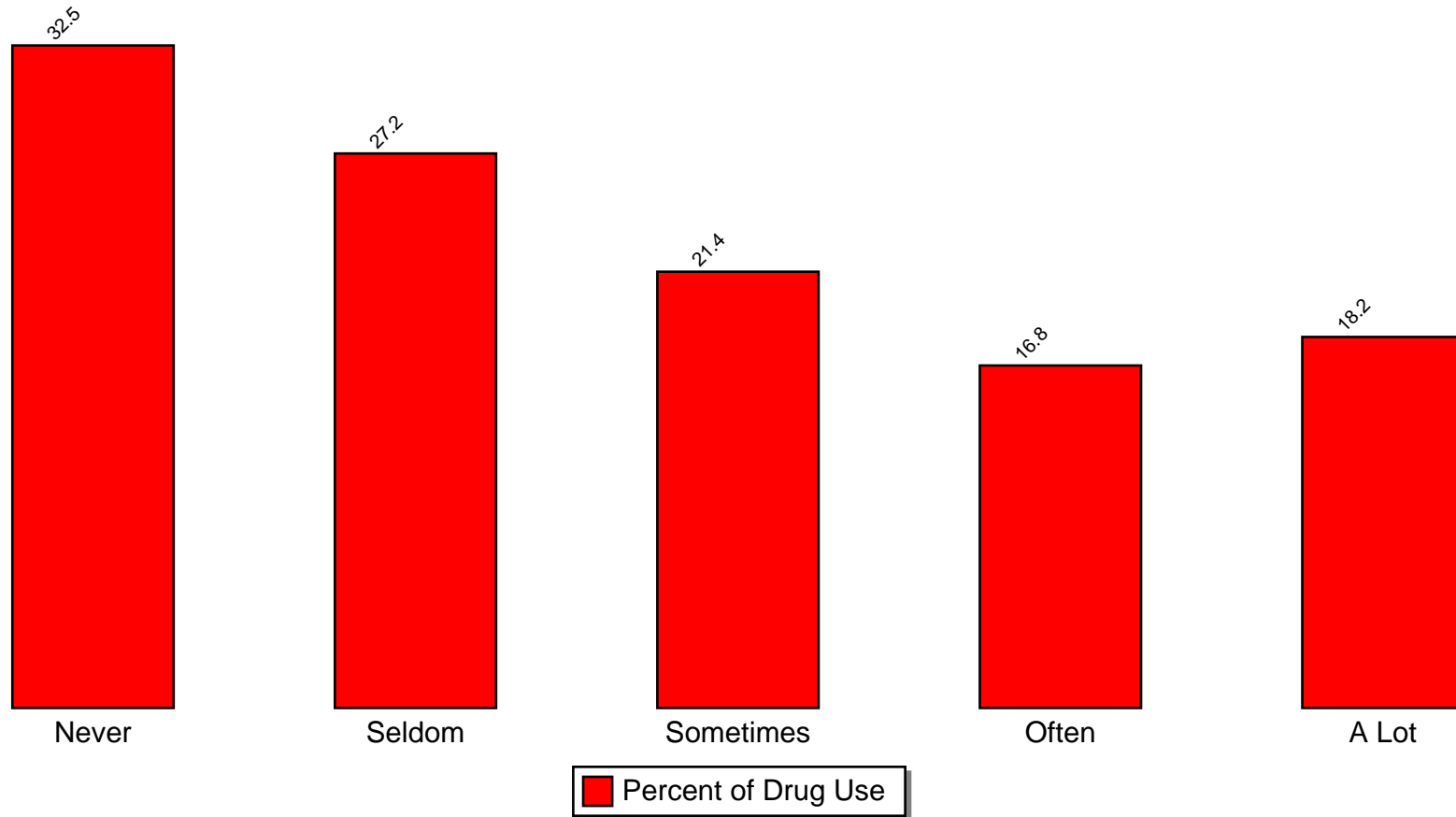
Source: Pride Surveys -- For the group of students who responded NEVER to this question, 31.9% reported using illicit drugs, for A LOT, 10.0% reported using illicit drugs

% Students Who Use Illicit Drugs by Make Good Grades (School Protective Factor)



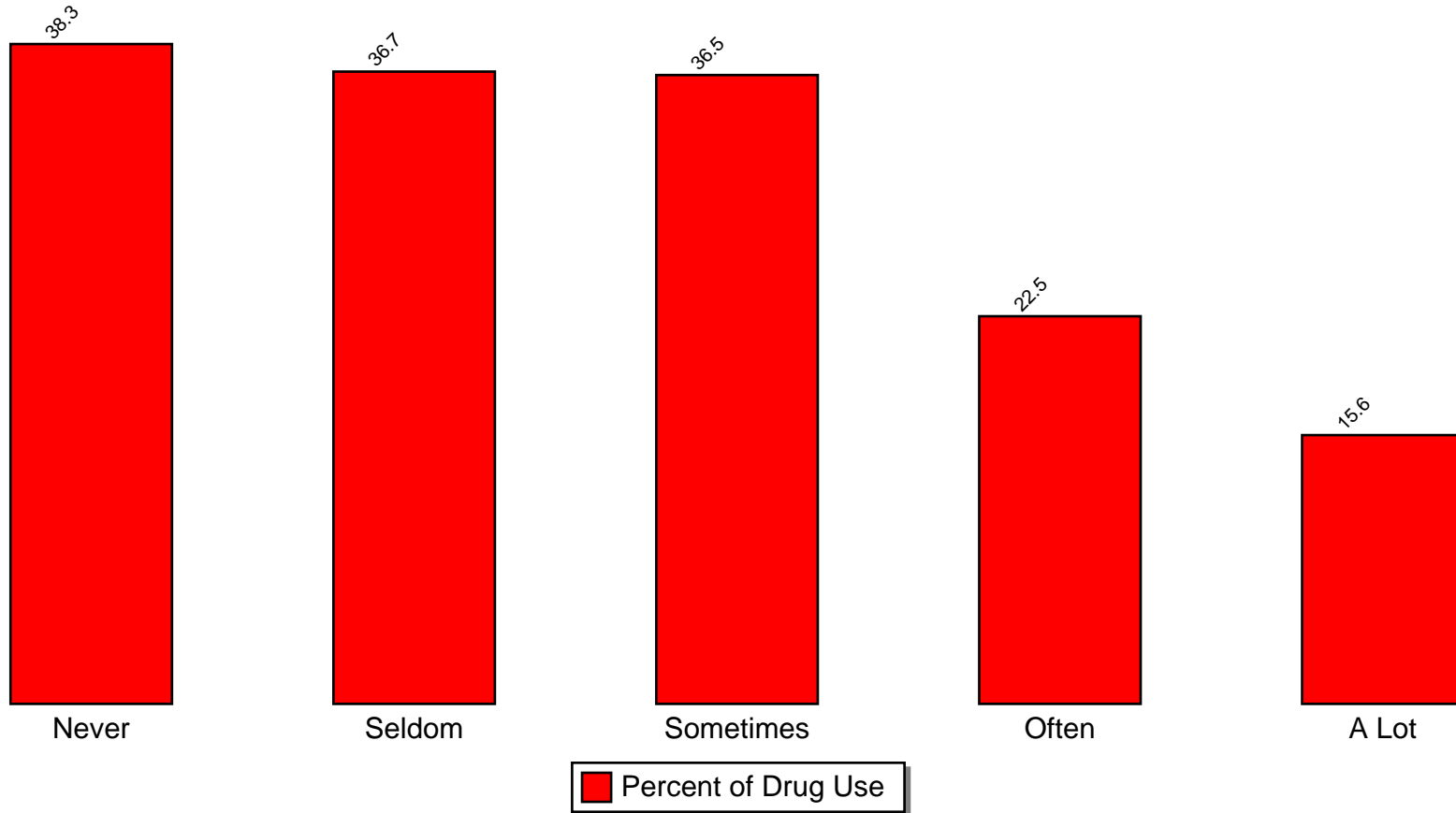
Source: Pride Surveys -- For the group of students who responded NEVER to this question, 62.5% reported using illicit drugs, for A LOT, 14.3% reported using illicit drugs

% Students Who Use Illicit Drugs by Parents Talk About Dangers of Drugs (Parent Protective Factor)



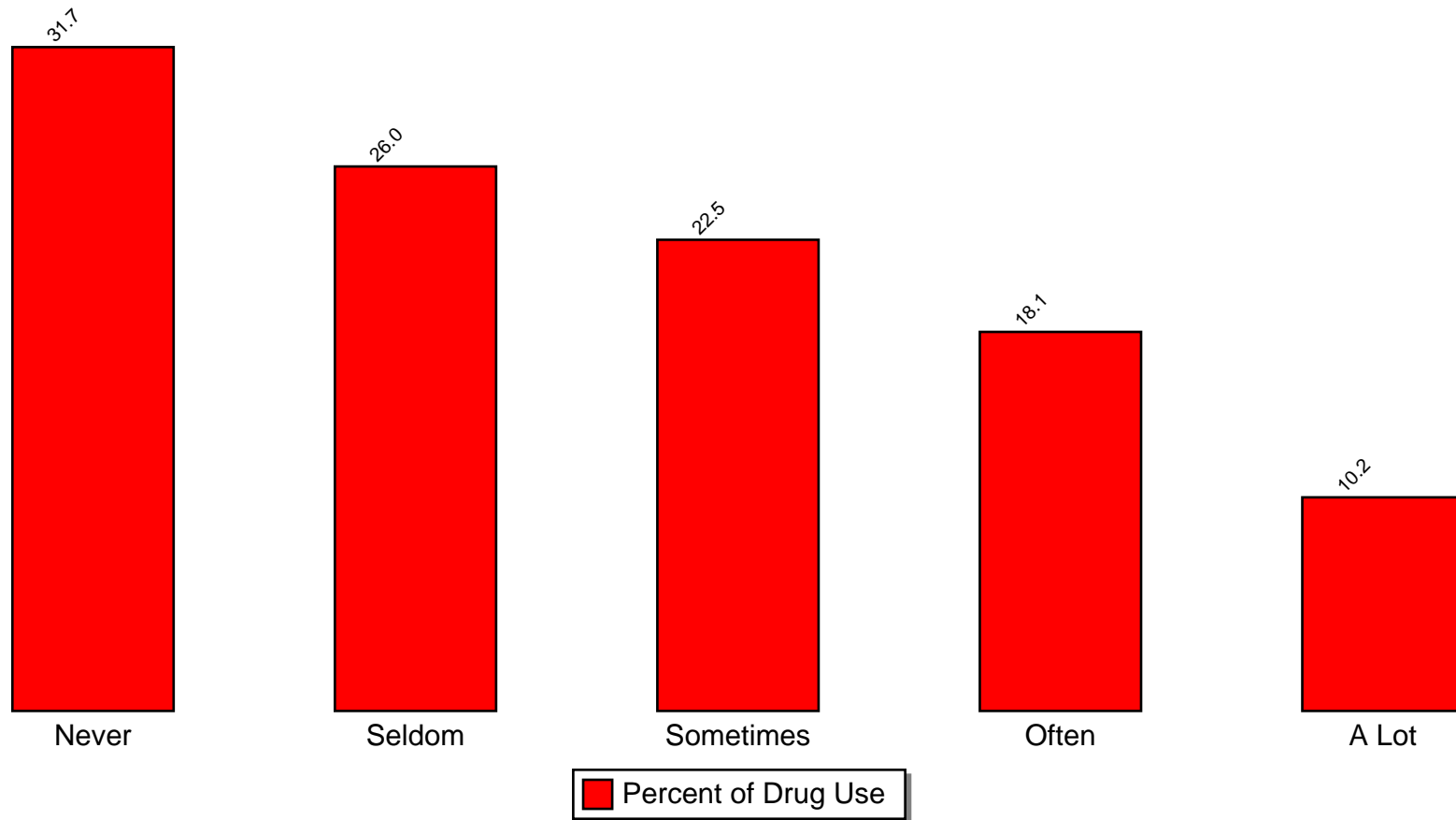
Source: Pride Surveys -- For the group of students who responded NEVER to this question, 32.5% reported using illicit drugs, for A LOT, 18.2% reported using illicit drugs

% Students Who Use Illicit Drugs by Parents Set Clear Rules (Parent Protective Factor)



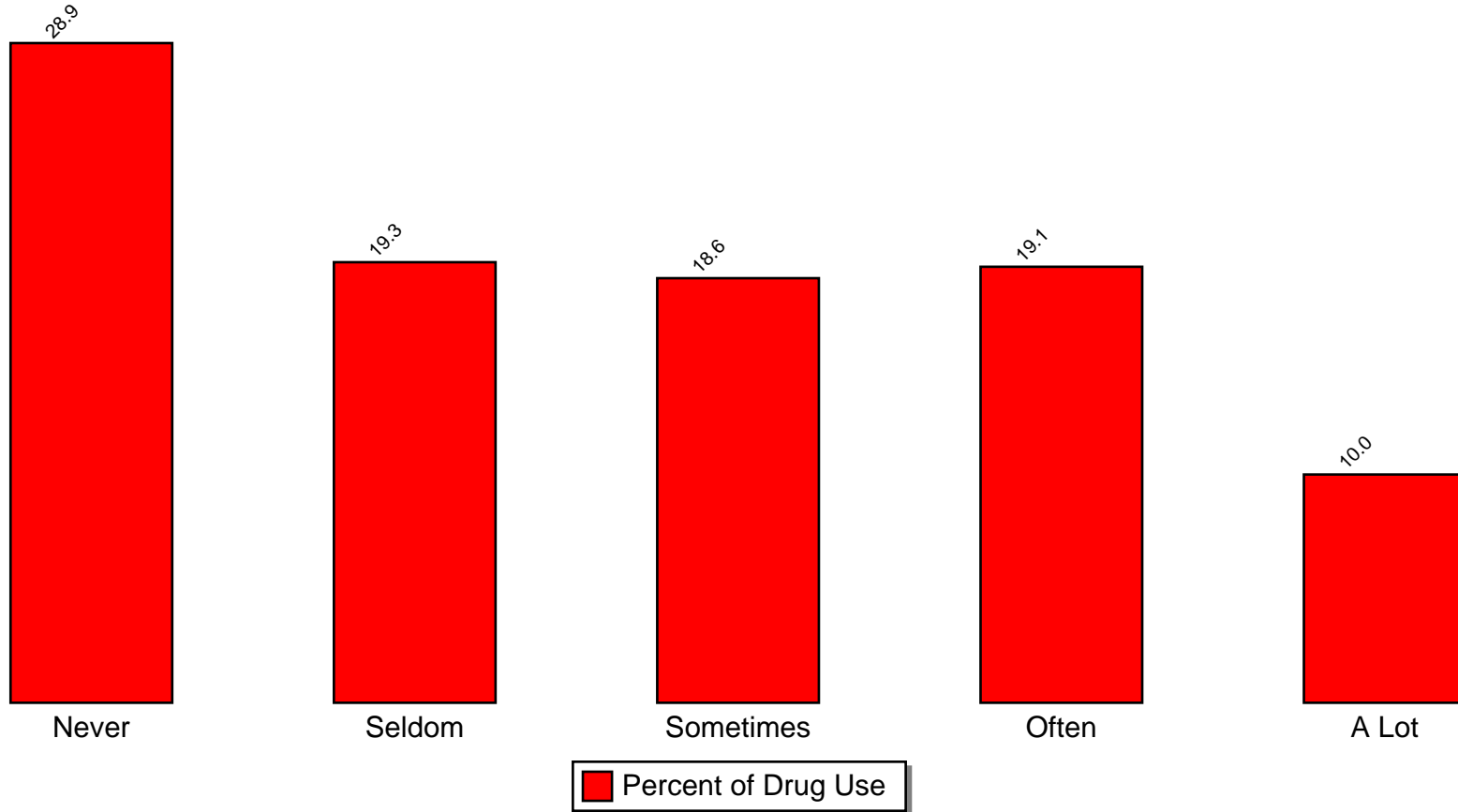
Source: Pride Surveys -- For the group of students who responded NEVER to this question, 38.3% reported using illicit drugs, for A LOT, 15.6% reported using illicit drugs

% Students Who Use Illicit Drugs by Attend Church, Synagogue, etc. (Community Protective Factor)



Source: Pride Surveys -- For the group of students who responded NEVER to this question, 31.7% reported using illicit drugs, for A LOT, 10.2% reported using illicit drugs

% Students Who Use Illicit Drugs by Take Part in Community Activities (Community Protective Factor)



Source: Pride Surveys -- For the group of students who responded NEVER to this question, 28.9% reported using illicit drugs, for A LOT, 10.0% reported using illicit drugs